

# THE CONNECTOR

Community News + Information

FEBRUARY 2025



KEARNEY LODGE COMMUNITY CONNECTION

MONTHLY COMMUNITY MEETING: **SAT FEB 8TH @ 11AM**

## Neighbor Spotlight

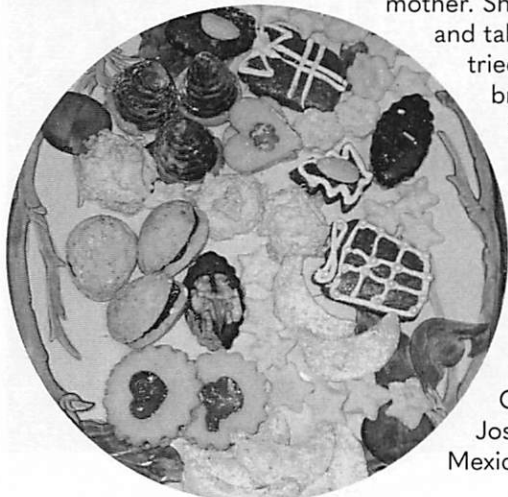
The Odstrcil's are a delightful family: charming, intelligent and beautiful. Their enthusiasm to know and be known by the K.L. community embraced me and soon I had embarked on a tour of their lives. Tomas & Lucie were born and raised in the Czech Republic. They married right after completing their education in 2017. That year, Tomas accepted a job with MIT and they moved to America. Employed in San Diego County, they settled in El Cajon. Their daughter Zofie (6) was soon born, followed by Louis (5) and Albert (2). They have resided in Kearney Lodge for four years now.

Growing up in Prague, Tomas and his twin brother deconstructed old TV's and appliances, fascinated by how they were engineered. (This must run in his family since his grandfather once turned an old washing machine into a lawn mower!) He and his brother's shared interests led them to likened studies in schooling. Tomas completed his PHD in Nuclear Physics in Germany. Lucie, growing up in Pisek, also committed to studies in science, achieving her Master's degree in Biochemistry. Lucie's long-term goal is to pursue a career in the Biochemistry field; she was recently hired by Gene Bio Company.

Tomas works for General Atomics now. He collaborates on research with the world's leading scientists in nuclear fusion. With the world's abundant need for greater, more affordable, clean and efficient powering-sources, he is working on ways to, aptly put, "build a sun on earth", fueled by hydrogen (extracted from sea water) which would contain an unlimited source of energy. Tomas specializes in studying impurities inside of the plasma in the fusion reactor that affect the behavior of the plasma. He uses superconducting magnets to control the plasma. This is a long and arduous pursuit, because a lot of experimentation is needed and funding does not come easy. Their plan was to stay one year in California, but now in their eighth year, it has become their permanent home. Some of many differences between the US & CR are notable.

CR government offers free education from primary through university level of education. Most Czechs walk, ride bicycles & use public transportation. There are fewer personal vehicles on the roads, however, driving regulations are strictly enforced. The variety & availability of grocery foods gives preference to home-cooking rather than frequenting eateries. By contrast to California's arid, desert climate, the CR is frequented by snow and verdant landscapes. Lucie is a dedicated homemaker and mother. She combines careful attention to raising her children whilst exploring new hobbies and talents. One of these honed talents is cooking, baking cakes, pastries, and pies. I first tried her tasty treats at the KLCC Cookie Meet & Greet earlier this year. She didn't just bring cookies—she also brought a dozen different kinds of delicious goodies that we all enjoyed. Her carefully crafted dough, fillings of nut slivers, whips, fruit jams and icings testify to her efforts and skill. (See the Christmas holiday goodies she gifted me!) She grows vegetables and several fruit trees of successful yield: avocado, blackberry, raspberry, orange, banana & passion fruit. She is also finding the time to learn Spanish! She facilitates the health, growth and experience of her children. Zofie trains in pre-competitive gymnastics and Louis likes to build machines, just like his father. For family fun and education, they frequently visit Balboa Park, the SD Zoo, USS Midway Museum, and the like. In their 8 years stateside, they have taken many road trips to our nation's most attractive parks: Yellowstone, Canyonlands, The Grand Canyon, Zion, Monument Valley, Black Canyon, Secoya, Joshua Tree and Death Valley. They plan to explore more of the US, and also visit Mexico.

LUCIE + TOMAS ODSTRCIL



Respectfully submitted by Amber Bennett

# ML Pro Landcare



**Marco**, the owner of ML Pro Landcare and his family are longtime Kearney Lodge residents.

He has completed a multitude of jobs in our community (and many others) and is, “...a trusted worker.”

- KL resident review

The team at ML Pro Landcare is ready, willing and able to tackle your yard and home needs!

A reliable, thorough and on-time team, with great communication, payment options and scheduling - they are ready to help you complete that project.

Give ML Pro Landcare a call for all your home, lawn and landcare needs!

services include:

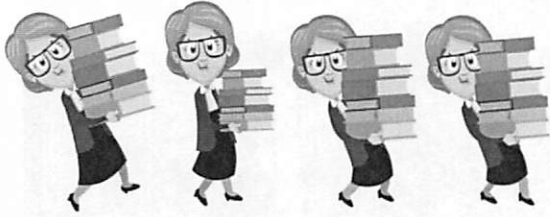
- gardening • fencing • concrete • paint • irrigation systems • pavers
- tree service • and more! •

**858.922.4803**

**Give them a call today!**



**Greetings from your new Volunteer Park Librarian, Wendy!** Carolyn moved away and we owe her a debt of gratitude for keeping the books so well organized for so long. I would also like to thank Linda for managing the library while I visited family for three weeks over the holidays. Thanks also to the generosity of so many of you who donate books to be borrowed at will by anyone with a penchant for reading; we are blessed with an abundance of reading material. Recently, Joleen asked if she could donate some of her religious readings so I set up a basket on top of the piano for spiritual readings of any faith. If it becomes over-filled, I will thin it out monthly and donate the extras to Goodwill. Speaking of getting over-filled, **please do not donate magazines, games or puzzles—we've run out of room for these : )**



I shelve books from the box next to the piano every few days. This sometimes means that I have to make room for them by “weeding” out duplicate titles, books in poor condition, and books that appear to have been on the shelf for a long time. Any books that are weeded but still in good condition get donated to Goodwill, the others go to recycling. Fortunately, this doesn't happen often.

Thanks as well to those who donate usable items for others in our park to enjoy/use. The Park's office assistant, Cheryl, manages the donation box inside the community room door and would like to remind us that because of health concerns, food items should not be donated and will be discarded. If you donate clothing we request that only new or nearly-new items be donated and that they be **clean**. Household items are also donated and should be unbroken and **clean**. Large items should not be left as donations because of space concerns. Friday is the Park's trash day so Cheryl cleans out the donation box on Thursdays. If Wendy shelves books on Thursday she takes leftover donations to Goodwill, but this is not consistent so it's better if you have donations that you would not want trashed, please donate them elsewhere.

**Thank you to everyone who participates in providing their extra books, etc. to others in our Park. Your community spirit is appreciated.**

NOTE FROM KLCC: Oversized, working and in-good-condition items that a resident would like to donate to another resident can be shared (under editor discretion for space and necessity) in the newsletter without an ad requirement. We are here to support each other and share resources so please submit items you might like to donate or exchange to [arin.klcc@gmail.com](mailto:arin.klcc@gmail.com).

## KLCC COMMUNITY MEETING MINUTES OVERVIEW

Officers Present: Arin, Ron, Val + Amber  
Nov Minutes Approved, as there was no Dec meeting, no Minutes

### Treasurers Report:

- Previous Balance: \$955.38 | Income: \$210
- Expenses: \$232.79 | New Balance: \$932.59

### Previous Business:

- Elections were held as the Dec meeting was cancelled. Current Board was reinstated unanimously. KLCC bulletin board proposed inside CH.
- The KLCC Craft Fair was a success! We are planning on seeking park participants much earlier this year and will put more attention into advertising, also open to sponsors to perhaps make even more of an event out of Fair. Thanks to all who participated and to Val + Linda T for coordination! Option for \$5/table incentive for additional advertising
- KLM Holiday Event was lovely, Amber's article along with the community decorations being named “Yards of the Month” for December was awesome to see! Newsletter looked great! New Business:
- Resident of the Month proposed as a new article idea, particularly those that support the community, do-gooders that provide something extra special to our community. Nominations can be sent to Amber's email, at the KLCC meetings or in the suggestion box. Include any fun facts and comments about what makes this resident befitting of Resident of the Month and we will feature residents as they come in with an article in the newsletter.
- KLCC looking into food programs for the community, specifically seniors and families with food insecurities, medical + estate planning.
- We're planning on doing the following events this year, 4th of July Celebration (sponsorship opportunities available), Holiday Craft Fair (which we will begin working on and advertising for early in an attempt to allow for additional participation by residents and potentially advertise in more extensive ways to get more shoppers. We also are open to a Halloween/Thanksgiving or a more Autumn/Fall celebration options.

Yard of the Month: SPC 77 | Attendee Drawing: None

Meeting Adjourned at: 11:50AM | Next Meeting to be held on: Feb 8th, 11 AM

## Create Your 'Go Bag'

Be proactive with a well-prepared emergency supply kit.

Get your emergency supply kit prepared well before any wildfire or disaster. Make sure it's accessible for quick evacuation and prepare for the possibility of being away from home for a while.

Your 'Go Bag' should be easy to carry and access. Use backpacks to store items like essentials and personal documents. For food and water, consider a wheeled tub or chest for easier transport. Keep your bag light enough for comfortable lifting into your vehicle.

Your 'Go Bag' Checklist | Ensure your 'Go Bag' includes:

- A 3-day supply of non-perishable food and 3 gallons of water per person
- A map with at least 2 evacuation routes
- Necessary prescriptions or medications
- A change of clothes and extra eyeglasses/contact lenses
- Extra car keys, credit cards, cash or traveler's checks
- A first aid kit and sanitation supplies
- A flashlight and battery-powered radio with extra batteries
- Copies of important documents (birth certificates, passports, etc.)
- Pet food & water
- Always have sturdy shoes and a flashlight near your bed, ready for sudden night evacuations.

If time allows, consider adding:

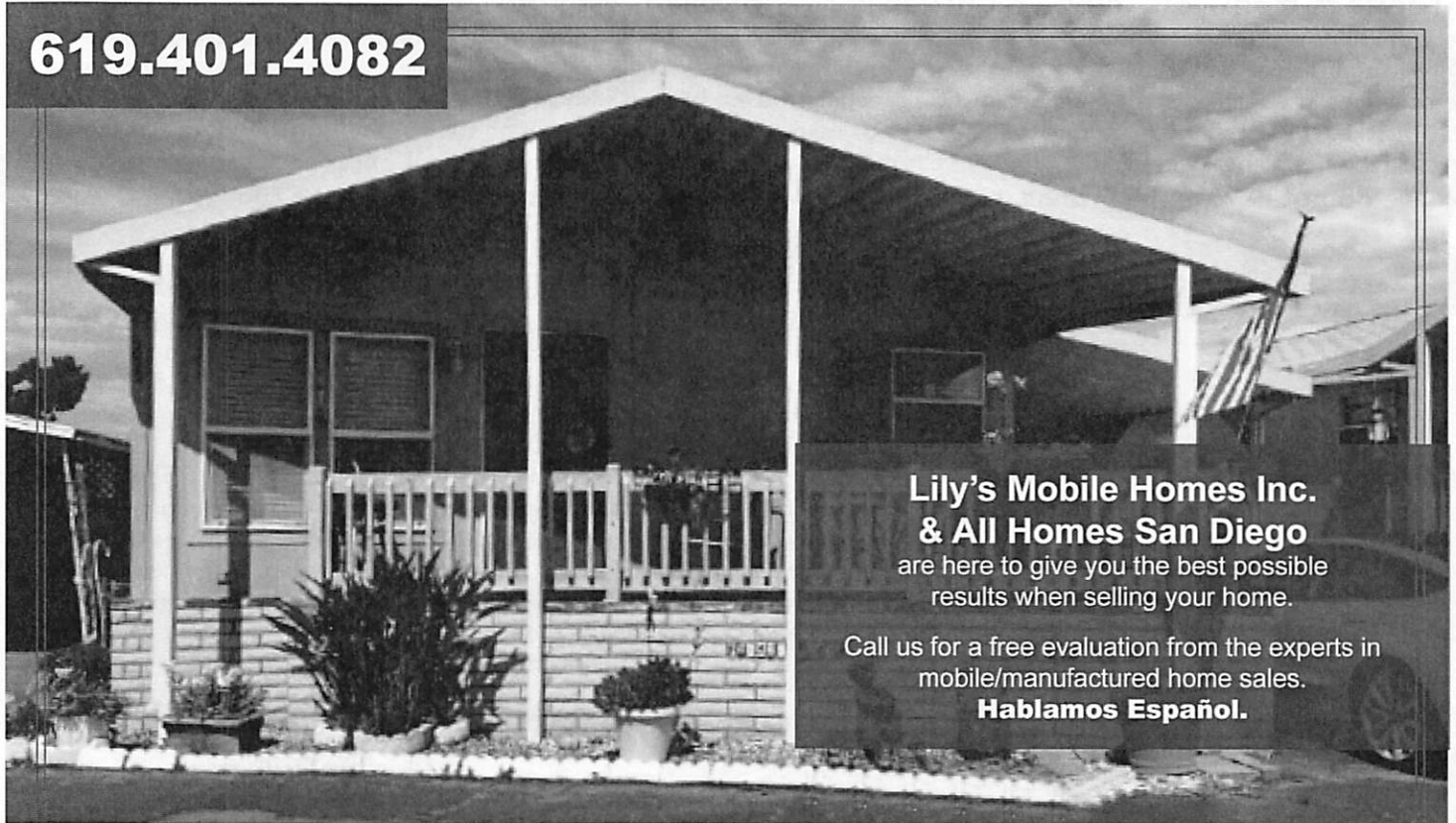
- Valuables that are easy to carry
- Family photos + irreplaceable items
- Personal computer data, hard drives + flash drives
- Chargers for cell phones + laptops



Submitted by Joleen

**BE SAFE OUT THERE!**

619.401.4082



**Lily's Mobile Homes Inc.  
& All Homes San Diego**  
are here to give you the best possible  
results when selling your home.

Call us for a free evaluation from the experts in  
mobile/manufactured home sales.

**Hablamos Español.**



**"WE BUY HOMES IN  
ANY CONDITION!"**



**THE LMH TEAM OF SENIOR REAL ESTATE SPECIALISTS HAVE BEEN  
IN THE MOBILE HOME BUSINESS SINCE 1999!**

**WE SUPPORT AND DONATE TO NON-PROFIT AGENCIES  
THAT SUPPORT MOBILE HOME RESIDENTS.**

**LILYSMOBILEHOMES.COM | 619.401.4082**



**LILY'S MOBILE HOMES INC. | CA DEPT OF HOUSING LIC #DL1252249  
ALL HOMES SAN DIEGO | CA DEPT OF REAL ESTATE LIC #01927451 | REALTOR®, SRES**





## The Yard of the Month: February is SPC 77!

Space 77 has an abundance of attractive plants. From the hedge-trees that line the porch on the side, to the drought tolerant plants pleasingly spaced throughout the white gravel, to the red porch flowers and the blue-potted plant out front that provide pops of color. This small space has been thoughtfully adorned.

Respectfully submitted by Wendy

## SENIOR SERVICES

- San Diego County Health and Human Services: *Aging & Independence Services*
- FACT (Facilitating Access to Coordinated Transportation) | (888) 924-3228
- MTS Access | (619) 557-4555
- On the Go | (858) 637-3210
- GoGoGrandparents | (855) 464-6872
- Healthy Living: *Aging & Independence Services* | 800-339-4661
- San Diego Community College District | *Free Courses Adults 55+* | 619-388-1950
- DIAL 2-1-1 for San Diego Services



**REFORMATION**  
LUTHERAN CHURCH & SCHOOL

### REFORMATION LUTHERAN SCHOOL

Are you looking for a solid, Bible-based, Christ-centered, Christian school for the kids?

We offer an excellent education in a fun, stress-free environment for students from pre-school (~3 years old) through 8th grade.

For more information, please contact the church office at **858.279.3311** or Sarah Rodriguez (School Superintendent) at **858.291.1036**.

*Tours are available and easily arranged.*

### REFORMATION LUTHERAN CHURCH

Are you looking for a good, Bible-based, Christ-centered, church in these troubled times? We would love for you to join us for Sunday Worship services: 8am + 10:30am

For more information, please contact the church office at **858.279.3311**

**4670 Mt. Abernathy Ave.**  
*Next to Madison High School*

## The Big Bang Theory

S	A	A	T	R	A	U	T	S	A	E	T	O	L
C	C	O	M	I	C	B	O	O	K	M	T	T	O
I	E	A	C	R	R	J	A	L	L	S	Y	E	H
E	B	J	E	S	C	I	E	N	T	I	S	T	O
N	W	S	G	O	O	O	T	H	E	O	R	Y	W
C	B	H	P	R	N	E	S	P	A	C	E	N	A
E	I	E	K	A	C	E	S	E	E	H	C	R	R
N	G	L	R	J	A	P	H	Y	S	I	C	S	D
C	B	D	L	E	P	E	N	N	Y	A	D	D	I
A	A	O	E	S	E	A	G	N	I	Z	A	B	P
G	N	N	H	H	Z	T	I	W	O	L	O	W	C
T	G	E	O	C	D	S	A	E	A	T	D	O	S
A	N	E	D	A	S	A	P	E	A	M	A	B	G
T	E	R	D	C	A	L	T	E	C	H	E	A	P

RAJESH  
AMY  
THEORY  
BIG BANG  
PHYSICS  
COMIC BOOK  
OCD  
CHEESECAKE  
LEONARD  
PASADENA  
HOWARD  
STUART  
SCIENTIST  
SCIENCE  
WOLOWITZ  
PENNY  
BAZINGA  
CALTECH  
SHELDON  
SPACE



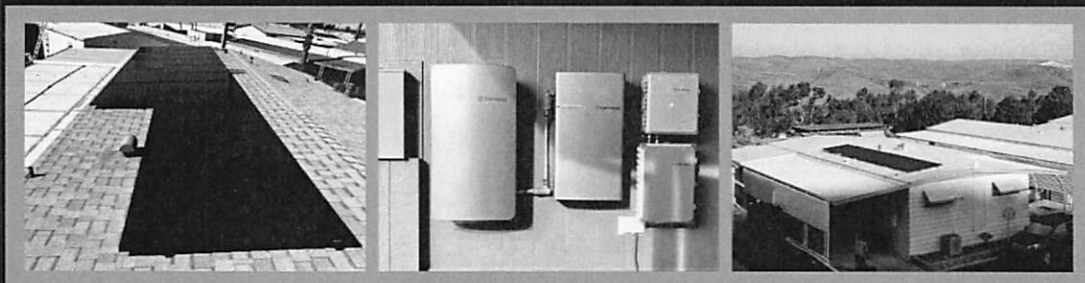
## COMMUNITY TECHNOLOGY SESSIONS

UPCOMING SESSIONS WITH NICK: **WED FEB 5TH + 19TH**



# KEARNEY LODGE MOBILE HOME

## TAKE ADVANTAGE OF OUR 1 YEAR PAY MY SOLAR BILL PROMO TODAY!



We can also do: Roofing, HVAC,  
Battery storage take advantage  
\$500-\$1000 referral bonus.

APPROVED BY MANAGEMENT!

### SOLAR BENEFITS

- \$0 Down Payment
- Manufactured Homes eligible
- 30 - 70% off current rate



ARLEX CARDOSO  
PH: 888-364-0555 EXT. 103  
ARLEX@CDSOLARENERGY.COM

TONY LOPEZ  
PH: 888-364-0555 EXT. 102  
TLOPEZ@CDSOLARENERGY.COM



www.cdsolarenergy.com  
LIC# 1050614



**WE MAY PAY  
CASH FOR  
YOUR HOME**

**CALL US NOW!  
858.486.0771**

\*Subject to TLC Management approval



Quality you can expect -  
Prices you can afford!

Seniors Take 25% Off

# Foundation Specialists

## Mobile Home Improvement, Repairs & Maintenance

- Foundations - Piers, Pads, Tops
- Earthquake Bracing
- Permanent Foundation Systems & 433A
- Leveling & Under Home Adjustments
- Plumbing Repairs & Complete Re-plumbs
- Roofing - Shingles & Aluminum
- Awnings & Awning Posts
- Privacy Screens & Window Awnings
- Painting - Interior & Exterior
- Sub-floor Repair
- Carpet, Laminate & Luxury Vinyl Plank
- Skirting
- Decks, Porches, Steps
- Siding
- Swamp Coolers
- Electrical Repairs

(if you don't see it on this list, ask!)

"We're experts in Mobile Home Improvement  
& Repair.

Give us a call for honest answers to all your  
questions & your free estimate!"

Call toll free

**(877) 296-1778**

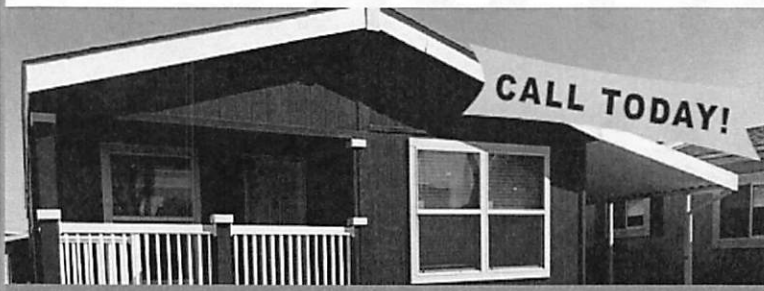
**(951) 296-1777**

[contact@westcoastmhi.com](mailto:contact@westcoastmhi.com)

or book online

[www.westcoastmhi.com](http://www.westcoastmhi.com)

today!



MOBILE HOME REPAIR SPECIALISTS



WCMHI, INC. v0721



All major credit cards accepted

\*Restrictions apply, see terms & conditions for more info [www.westcoastmhi.com/home](http://www.westcoastmhi.com/home)

CA LIC 1028109

**FREE ESTIMATES & SENIOR DISCOUNTS**



We recently SOLD more  
homes in your park!

List your home with TLC and we will SELL  
your home FAST!



Call Today!

858-486-0771

[www.tlcmanufacturedhomes.com](http://www.tlcmanufacturedhomes.com)

# FEBRUARY 2025

♋ Pisces Feb 19 - Mar 20  
 ♒ Aquarius Jan 20 - Feb 18

SUNDAY	MONDAY	TUESDAY	WEDNESDAY	THURSDAY	FRIDAY	SATURDAY
						
						
						

BIRTH FLOWERS: VIOLETS, PRIMROSES + IRISES  
 BIRTHSTONE: AMETHYST, BLOODSTONE + ONYX

<b>KLCC Board of Officers</b>	PRESIDENT <b>Arin Wiggins</b> <i>arin.klcc@gmail.com</i> 619.920.6808	VICE PRESIDENT <b>Ron Maurice</b> 858.633.8033
	SECRETARY <b>Amber Bennett</b> <i>crazycarrot1.ab@gmail.com</i> 858.302.8729	TREASURER <b>Valerie Dombrow</b> <i>vadombrow@yahoo.com</i> 858.243.3054

**NIGHT TIME SECURITY OFFICER: 858.260.4089**

## NEWSLETTER AD PRICES PER MONTH

Monthly payments for ads must be received by  
**KLCC Treasurer: Val** prior to publication.

Please contact *The Connector* at:  
*vadombrow@yahoo.com* each month to  
**start, continue, pause or stop your ad post.**

Business Card  
\$8

1/4 Page  
\$12

Full Page  
\$35

1/2 Page  
\$20

### PRIVATE ORGANIZATION NOTIFICATION

The KLCC is a private association dedicated to serving and improving the quality of life for the entire community with emphasis on safety, courtesy and neighborhood. Opinions expressed in "letters to the editor" sections of The Connector do not necessarily represent the views of the editorial staff, but are printed to encourage comments and discussion among resident homeowners. **Submissions to The Connector must be received NO LATER THAN THE 20TH OF EACH MONTH.** The Connector reserves the right to use such discretion as it may consider appropriate in the printing of advertising or other materials submitted for publication. You are encouraged to do your own research prior to utilizing the products and/or services advertised herein. Advertisements of products and/or services do not imply endorsement in any capacity. **The KLCC is NOT RESPONSIBLE for your use or purchase of goods/services in any published ad.**



### YARD OR RESIDENT OF THE MONTH NOMINATION

SPC# or Name \_\_\_\_\_

DESCRIPTION: \_\_\_\_\_

CUT OUT AND LEAVE IN A SUGGESTION BOX OR BRING TO A MEETING!